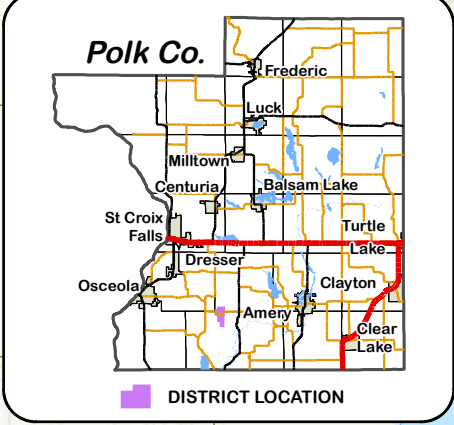
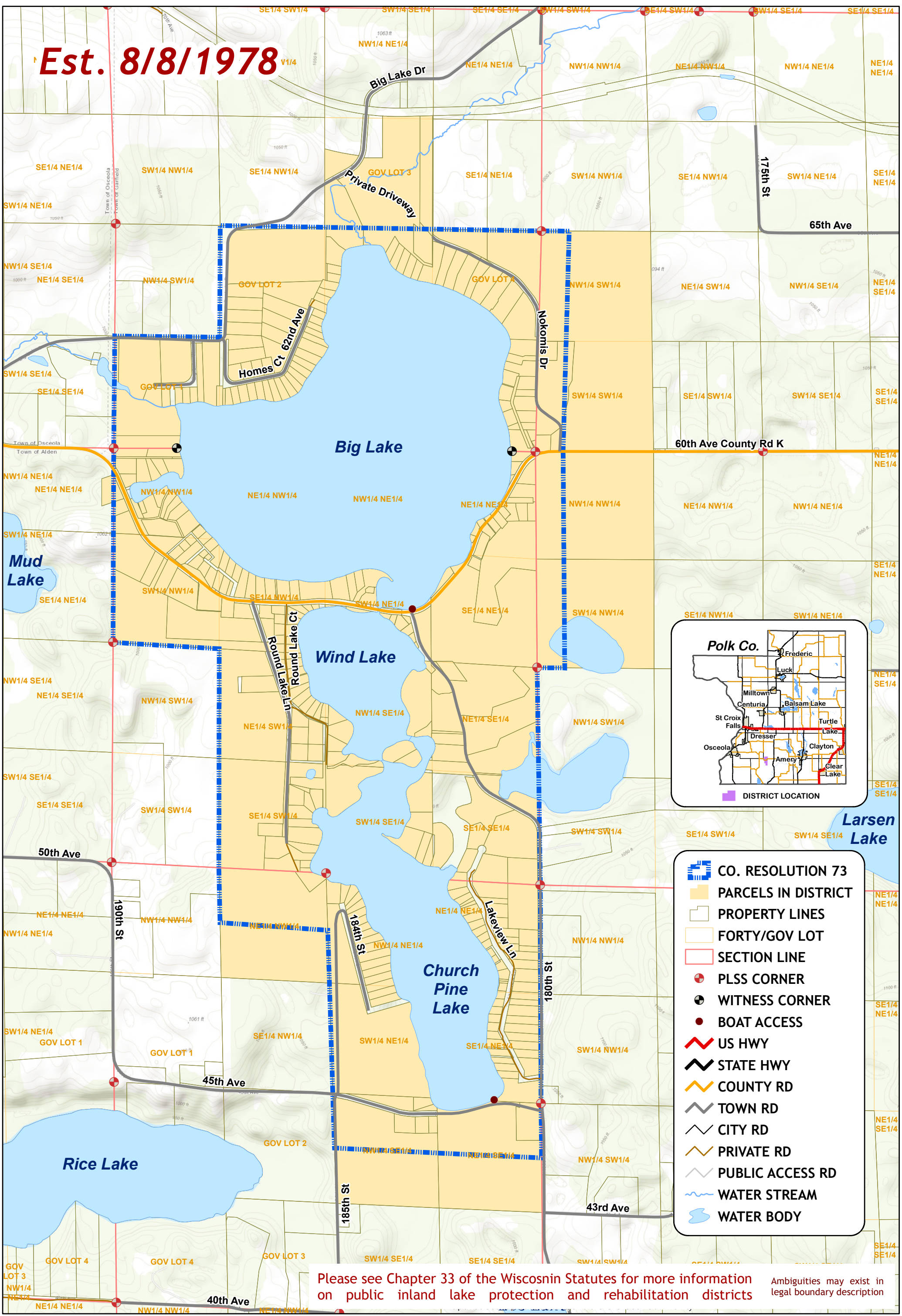


**Est. 8/8/1978**



- CO. RESOLUTION 73**
- PARCELS IN DISTRICT
  - PROPERTY LINES
  - FORTY/GOV LOT
  - SECTION LINE
  - PLSS CORNER
  - WITNESS CORNER
  - BOAT ACCESS
  - US HWY
  - STATE HWY
  - COUNTY RD
  - TOWN RD
  - CITY RD
  - PRIVATE RD
  - PUBLIC ACCESS RD
  - WATER STREAM
  - WATER BODY

Please see Chapter 33 of the Wisconsin Statutes for more information on public inland lake protection and rehabilitation districts. Ambiguities may exist in legal boundary description.